

S K S AUTOMATION

280-Needar Moad Harmada,Jaipur (Raj.)302013 Email – sksautomation11@gmail.com ,
Mobile : +91-7727987985

TO, M/S KGN ENGINEERING WORKS NH-A48 Andhi Bypass,Near Bharat Petrol Pump,Andhi,Jamwaramgarh,Jaipur,Rajasthan. GSTIN : 08EOKPK7683K1Z2 MOBILE: 7727987985	Invoice No. Date :	Performa 07-01-2025
	P.O. No. Date	

Sr. No.	Description of Goods	Quantity	Unit Price (`)	Total Amount(`)
1.	DM1530 FIBER LASER CUTTING MACHINE	1	26,50,000	26,50,000
	3000W MAX LASER SOURCE			
	BOCHU CHINA SERVO MOTOR DRIVE			
	BM110 RAYTOOL HEAD			
	CYPCUT CONTROLLER 2000E			
	ALL LASER ACCESSORIES			
			SUB TOTAL.	26,50,000
			IGST 18%	4,77,000
RS.			Frieght & octroi	Extra Actual
			G. Total	31,27,000

GSTIN:08AFFFS5549N1Z8

BANK DETAILS:

NAME- S K S AUTOMATION

A/c No. 50200094243770

RTGS/NEFT IFSC CODE – HDFC0008588

Terms & Conditions:

Payments 100% Advanced by Payee's A/c RTGS/NEFT M/s S K S AUTOMATION Parts
Damages physically are not cover in Warranty All disputes are Subject to JAIPUR jurisdiction
only.

Lens consumable parts are not cover in warranty .

S K S AUTOMATION

ARJUN CHOUDHARY

+91-7727987985

Fiber master Jinzhao1530



Machine's specifications

CNC Control system	Cypcut 2000E
Laser source	Max
Laser head	Raytool BM110
Drive	China S9 BOCHU servo motors
Reducer	Faston
Transmission	Taiwan SHAC guide rail, Germany Lean rack
Laser lens	Raytool
Proportional valve	Japan SMC
Solenoid valve	Japan SMC

Computer with original laser software	WIFI function available
Standard accessory	Water chiller, Exhaust blower, Protective mirror

2. Technical parameters

Model	JZ1530
Color	White
Laser type	Fiber laser
Laser power	1000---6000w
Applicable material	stainless steel, carbon steel, galvanized sheet, iron, aluminum, brass, copper
Max cutting acceleration	2G
Stroke of X axis	1500mm
Stroke of Y axis	3000mm
Resolution ratio	0.025mm
Re-position precision	±0.02mm
Power requirement	220/380V, 50/60HZ
Auxiliary gas	Pure air or Oxygen or Nitrogen
Graphic supported	DXF、DWG、JPGE、PCX、AI、TIFF、PLT、CDR、BMP

Features

1) UNIQUE SHEET- METAL PROCESSING FACTORY, STANDARDAL PRODUCTION LINE

We have our own sheet metal factory where the machine body is made by ourselves, not outsourced,so we could control the quality well.

We have our own product-design team, including research, design and production and can customizenon-standard laser equipment for clients.

2) HIGH PRECISION MACHINE WORKTABLE

The machine worktable is the basic structure of a machine, all good things such as high-classconfiguration, high cutting precision must be based on it!

Machine's worktable is milled by large CNC planer type milling machine, which ensures the worktableis on the same level. The deviation of worktable levelness is within ±0.01mm. So the worktable will be hard to be out of shape during a longer period working.



3) PRECISION INSTRUMENTS TO ENSURE MACHINE HIGH PRECISION

The collimator and dial gauge used to accurately detect the parallelism, perpendicularity and straightness of the machine guide rail, to ensure high precision.



4) INTELLIGENT DUST & PARTICLES EXTRACTION SYSTEM

We apply the new divided-area dust removing exhaust system in our machine body.

It helps to extract the dust and metal particles while the machine is running to protect the laser equipment and keep the entire workspace clean. When the cutting head moves, it will automatically trigger the extraction function in certain area and other cells will keep shutting down. If the cutting head moves away to the other cells, the extraction function will be automatically shutting down in previous cell. This design can concentrate the extraction power onto the only one working cell to increase the extraction capacity.



5) HIGH CUTTING ACCELERATION AND PRECISION

Max cutting acceleration for this machine can be up to 2G! The acceleration is very important. It means how much time it takes from the low-speed cutting (cutting corner or turning point of a round or square) into high-speed cutting (linear cutting).

Faster cutting acceleration can ensure the machine cuts corners or turning points very smoothly, it means the machine has higher cutting precision and speed. This machine can cut the bicycle with the size of 1/5 of coin and cut through straight and round lines with 0.2mm gap. (you can see through these precise lines).



6) MACHINE BODY

- Heat treatment to strengthen the intensity and stiffness of base;
- Its structure matches industrial machine tool standard with high accuracy and rigidity, and machine mechanical stress has been completely removed during the process of welding and machining;
 - Machine frame is effectively spread the thrusting force produced by motion of electric motor to every part of the machine and thus guarantees the machine runs extremely stable and the cutting precision is high without vibration influence.

◆ CONTROL SYSTEM CUTTING DATA BASE LIBRARY

- The laser system features an integrated cutting data base with parameters for many common material and different material-cut conditions. The machine operator can make modifications to the cutting data base at the control panel. The cutting data base management software can list all of the available material files or can requested to display only those files that meet certain criteria. For example, the system can display only those materials of a particular type or thickness that fit in a process group. Using the cutting data base management system, the operator can select closest existing cutting data file as a starting point for next cutting.

◆ FIBER LASER SOURCE



- Light is already coupled into a flexible fiber: The fact that the light is already in a fiber allows it to be easily delivered to a movable focusing element. This is important for laser cutting, welding, and folding of metals and polymers
- High output power: Fiber lasers can have active regions several kilometers long, and so can provide very high optical gain. They can support kilowatt levels of continuous output power because of the fiber's high surface area to volume ratio, which allows efficient cooling
- High optical quality: The fiber's wave-guiding properties reduce or eliminate thermal distortion of the optical path, typically producing a non-diffraction, high-quality optical beam
 - Reliability: 100,000 hours lifespan. Fiber lasers exhibit a great stability under the high temperature and vibrational environment. Also, it has the maintenance-free turnkey operation.

◆ STABLE LASER CUTTING HEAD

- Suitable for QBH QD connector
- auto focus head

- Strict dust-proof design with three pieces of protective mirrors
- Separated drawer of protection window for focus lens is convenient for maintenance and replacement.

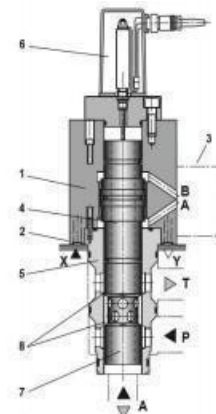
◆ MOTION SYSTEM



- The material remains stationary on the cutting table as the cutting head moves in the X, Y and Z-axis. This high precision three axis drive system consists of re-circulation ball screw in the Z axis with dual high speed, helical rack and pinion drives in the X & Y-axis. The result is faster part processing with a quieter and smoother drive system. In conjunction with the guides the motion accuracy and positioning speeds provides exceptional performance.

◆ PRESSURE REGULATOR

- Japan SMC solenoid and proportional valve are applied for the machine. According to different cutting materials, a good CNC pneumatic control system is very important for this machine and it can regulate the gas pressure and gas types to achieve an outstanding quality cutting. Gas consumption reduces approx 25~30% and increase the production capacity to 30% or higher.



Double-drive precision Rack drive

Y axis adopts double servo drive gear , imported slideway , gear and rack . Advanced assembly technology , fast machine running speed , quick acceleration, smooth and reliable .



Precision Reducer

Suitable for high-precision positioning and long duty cycle applications , with high precision , high twist , high reliability, low noise , long lifetimeetc , characteristics.

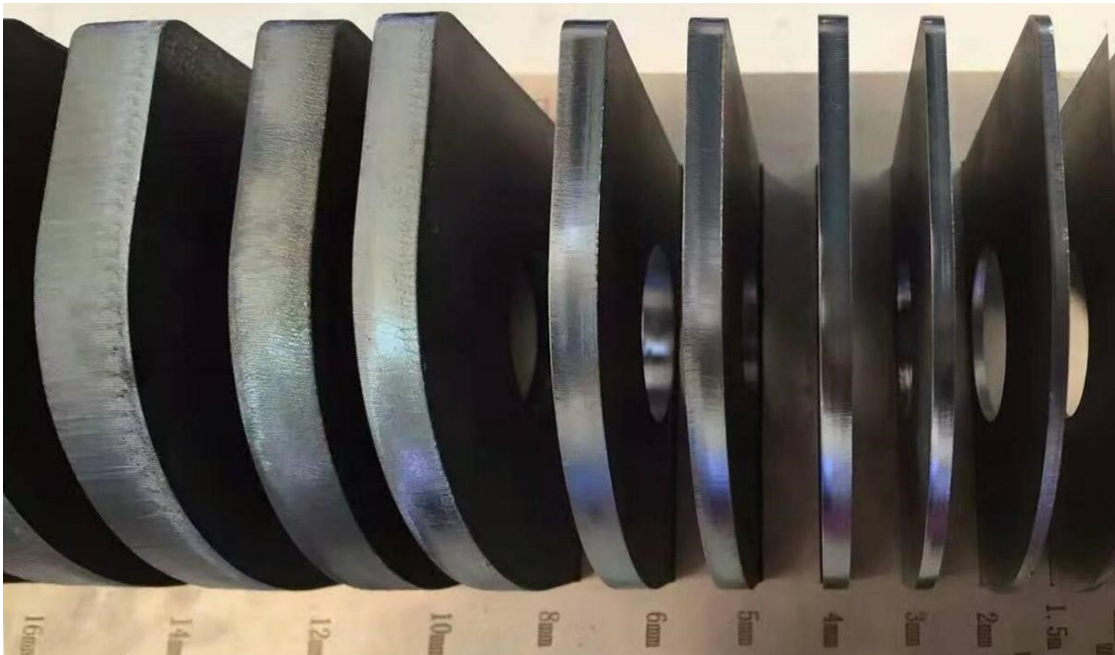
- High Dynamic Application
- High positioning Accuracy
- Space-saving Design
- Maximum Power density
- High torsional rigidity
- Stringent security requirements

Lubricating oiling machine

Provides good lubrication, reduce friction between moving parts to reduce wear and prevent rust, are used in lubrication systems.



V、Samples



S K S AUTOMATION located in **JAIPUR** It is a manufacturer engaged in the research, development, production and service of Fiber laser cutting machine, Fiber/UV/CO2 laser marking machine, Co2 laser engraving and cutting machine, CNC router, Fiber laser welding machine, Fiber laser

cleaning machine, UV printer and Eco solvent, also provide all machine spare parts.

